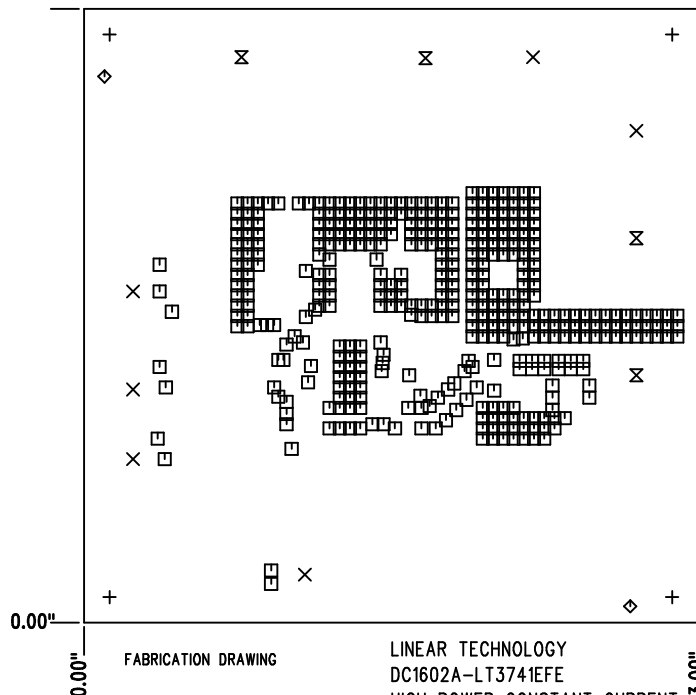


REVISION HISTORY				
ECO	REV	DESCRIPTION	APPR	DATE
-	2	PRODUCTION	WALKER B.	02-09-10

3.00"



FABRICATION DRAWING

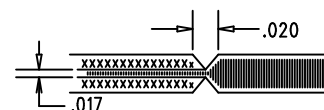
LINEAR TECHNOLOGY
DC1602A-LT3741EFE
HIGH POWER CONSTANT CURRENT
CONSTANT VOLTAGE,
SYNCHRONOUS BUCK CONTROLLER
DATE: 02-09-10


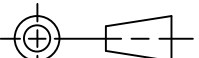
SIZE	QTY	SYM	PLATED	TOL
0.185	4	+	NO	+/-0.003
0.094	6	X	YES	+/-0.003
0.012	407	□	YES	+/-0.003
0.07	2	◇	NO	+/-0.003
0.205	4	⊗	YES	+/-0.003

- ===== LAYER 1 (COMPONENT SIDE)
- ===== LAYER 2
- ===== LAYER 3
- ===== LAYER 4 (SOLDER SIDE)

NOTES: UNLESS OTHERWISE SPECIFIED

- FAB PER IPC-A-600.
- MATERIAL: -EPOXY FIBERGLASS, NEMA GRADE FR-4
-FINISHED THICKNESS TO BE 0.062" +/- .005"
-TOTAL OF 4 LAYERS WITH 2 OZ. CU ON THE OUTER LAYERS
AND 1 OZ. CU ON THE INNER LAYERS.
-FLAMMABILITY RATING: 94 V-0 MINIMUM.
- SIZE: CUT TO DIMENSIONS AND TOLERANCES SHOWN.
0.00" ARE PRIMARY DATUMS.
- DRILLING: -DRILL HOLES PER SCHEDULE. PLATE THROUGH
HOLES WITH COPPER, 0.001" THICK MIN.
-ALL HOLE SIZES ARE SPECIFIED AFTER PLATING.
-HOLE LOCATION TOLERANCES ARE +/-0.003"
IN RELATION TO CENTER
- FINISH: -SMOBC USING LPI BOTH SIDES, COLOR GREEN.
-GOLD IMMERSION BOTH SIDES.
(LEAD FREE SOLDER CAN BE USED FOR PROTOTYPE)
-FOR SILKSCREEN: BOTH SIDES USE WHITE NON-CONDUCTIVE INK.
- DO NOT ALTER ARTWORK e.g. TO ADD LOGO OR DATE CODE.
PAD SIZE CAN BE MODIFIED TO MEET END FINISH.
- PCBS ARE TO BE RoHS COMPLIANT.
- SCORING FOR PANELIZED PCB:



UNLESS OTHERWISE SPECIFIED DIMENSIONS ARE IN INCHES TOLERANCES ON ANGLE ±1° 0.XX" = ±0.01" 0.XXX" = ±0.005" INTERPRET DIM AND TOL PER ASME Y14.5M-1994	APPROVALS		 LINEAR TECHNOLOGY	1630 MCCARTHY BLVD MILPITAS, CA 95035 PH: (408) 432-1900 LTC CONFIDENTIAL- FOR CUSTOMER USE ONLY		
	PCB DES.	A.K.				
	ENG.	WALKER B.				
THIRD ANGLE PROJECTION			TITLE: FABRICATION DRAWING			
			HIGH POWER CONSTANT CURRENT, CONSTANT VOLTAGE			
			SYNCHRONOUS BUCK CONTROLLER			
DO NOT SCALE DRAWING	SCALE: NONE	FILENAME: DC1602A-2.PCB	SIZE N/A	IC NO. LT3741EFE DEMO CIRCUIT 1602A	REV. 2	